

# CERTIFICATE OF LOCATION OF GOVERNMENT CORNER

EAST QUARTER Corner of Section 5, Township 107N, Range 39W

5th Principal Meridian, State of Minnesota, County of MURRAY

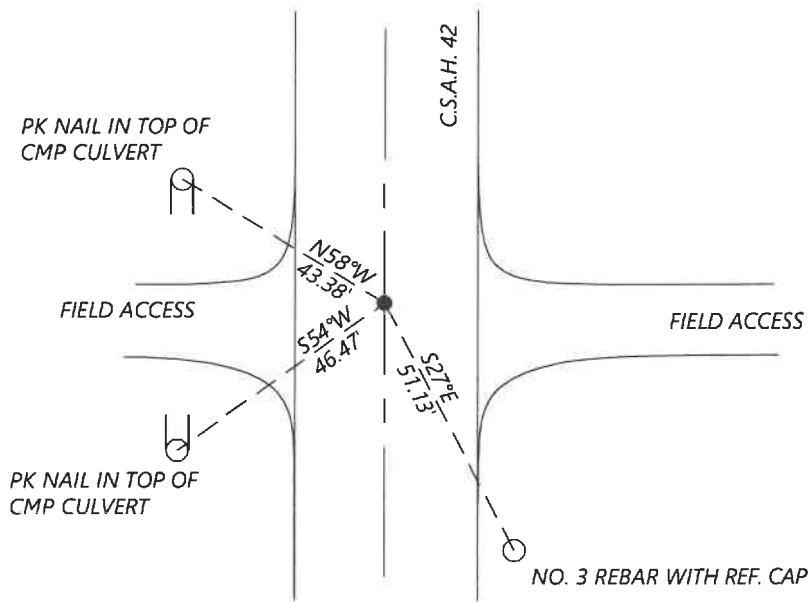
At the corner location shown on the sketch:

On 8/27/2020 found a NO. 4 REBAR WITHOUT CAP FLUSH WITH ASPHALT  
DATE

left monument as found       lowered monument       removed monument (explain)

On \_\_\_\_\_ placed a \_\_\_\_\_  
DATE

### SKETCH OF REFERENCE TIES



N.T.S.

Statement of evidence for this corner location is on back of this page.

I hereby certify that this document was researched and prepared by me or under my direct supervision and that I am a licensed Land Surveyor under the laws of the State of Minnesota.

Signature [Handwritten Signature]

Date 6/16/2021 License No. 45874

Title:

- Land Surveyor       Professional Engineer
- County Surveyor       County Engineer

### OFFICE OF THE COUNTY RECORDER

County of Murray

I hereby certify that this document was filed in the Co.

Recorder's office at \_\_\_\_\_ M. on the \_\_\_\_\_ day of \_\_\_\_\_ A.D. 20

County Recorder Karen Brown

by JUN 22 2021, Deputy

DOCUMENT NO. \_\_\_\_\_

Statement of Evidence:

East Quarter Corner of Section 5, Township 107 North, Range 39 West, 5th Principal Meridian, Murray County, Minnesota.

1861 July, GLO Notes: Set post in mound.

1978 April, Survey record for Section a5 shows that the corner was dug with a backhoe and found nothing.

1991 December, Corner certificate filed by Lyle Moseng shows that he set a  $\frac{5}{8}$ " rebar with seal at the single proportion distance.

1999 May, CSAH 42 plans show the corner at PI station 5+649.119

2000 March, Highway Department records show that a  $\frac{3}{8}$ " rebar was placed at the corner.

PK nail top of culvert NW 43.35ft

PK nail top of culvert SW 46.50ft

Rebar W 148.61ft, 239.83ft, 329.75ft

2017 May, Highway Department records show a No. 4 rebar was placed at the corner. They listed the coordinates: N: 192566.17 E: 558783.34

2020 September, Westwood Professional Services searched and found a No. 4 rebar and 2 ties from 2000 Highway Department data. The found iron fits the 1991 corner certificate location.

Analysis of the recovered data, field evidence and survey measurements, indicates that the monument found is the correct perpetuation of this corner. For additional information concerning this corner please contact Westwood Professional Services.